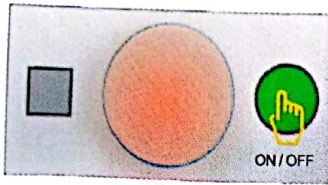
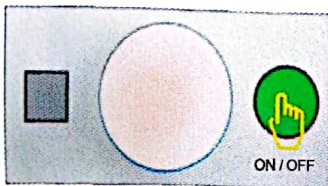


● Power display



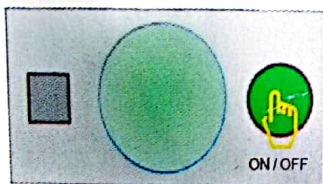
 **Low power (<10%)**

Red light Indicates lack of battery and needs to be charged urgently;



 **Middle power (<70%)**

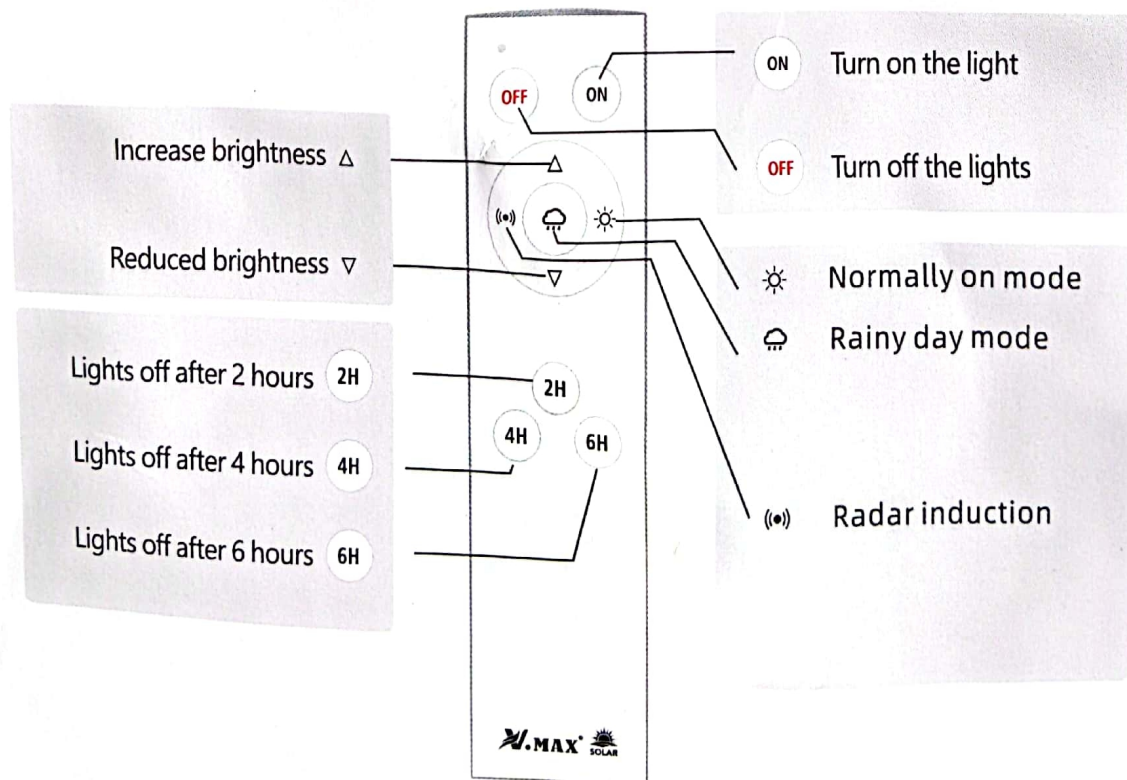
Yellow light indicates that the current is below 70%, indicating that it can be charged;



 **High power (100%)**

A full cell indicates the lamp has fully charged.

● Remote Control Key Instructions

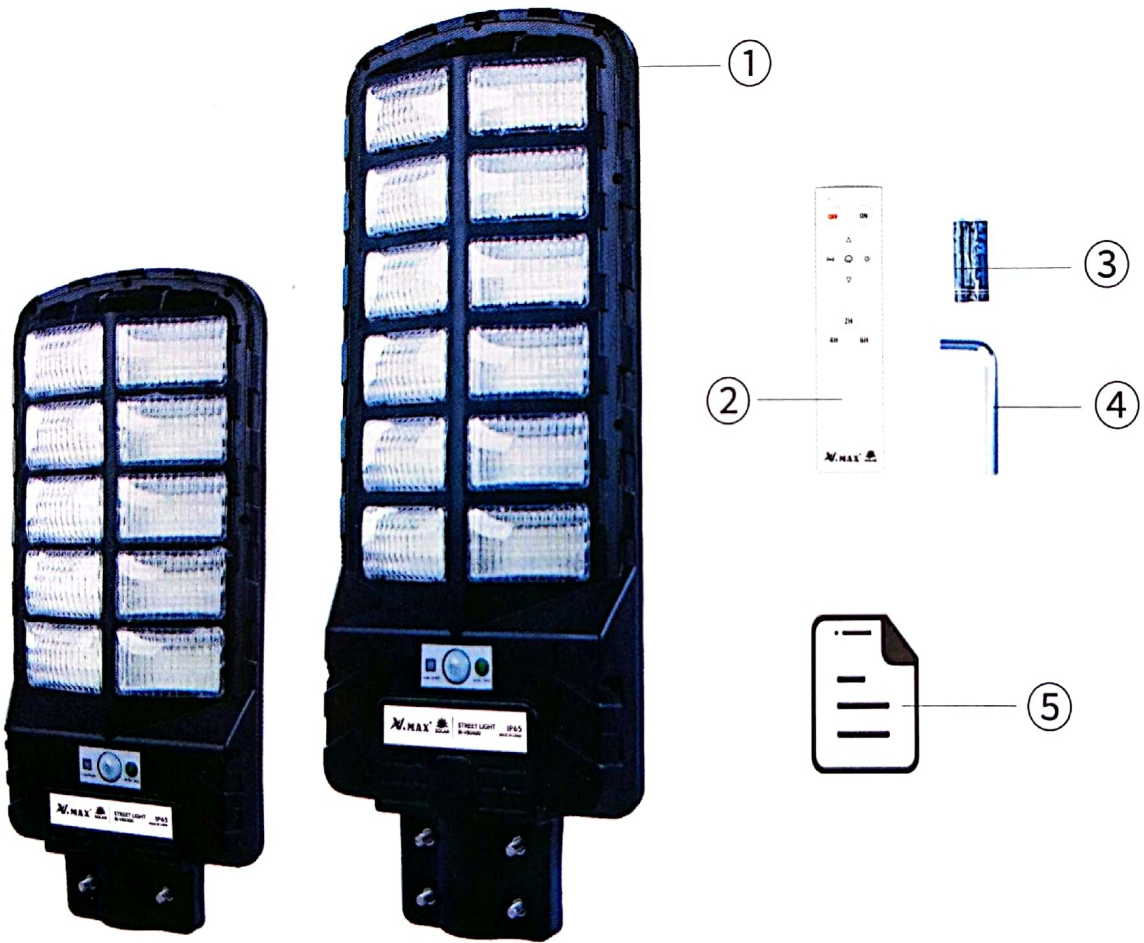


● Usage Method

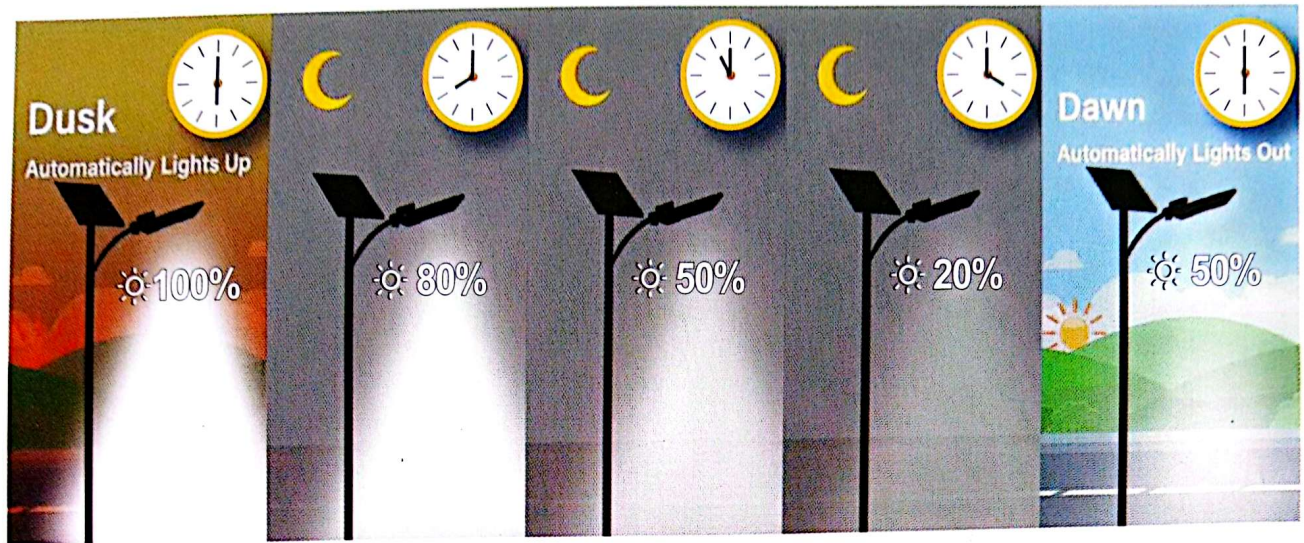
1. Check the battery level: Make sure the lamp has been fully charged before use.
2. Please check all the components are completed in the package.
3. Check whether the lamp can be turned on or off. If the lamp can be turned on and there is an indicator light prompt, it means that the lamp is in good condition and can be installed and used.



IR-V80300 IR-V80400 IR-V80500



- | | | |
|---------------------|--------------------------|---------------|
| ① Solar street Lamp | ② Remote control | ③ The battery |
| ④ Hex Key Wrench | ⑤ operation instructions | |



● Important hints

1. Install the lamp:

Install the lamp correctly at the place where the sunlight can reach, and press the switch, the lamp shall be lighting on normally. After two minutes, the lamp will enter the light sensing mode. If installing during daytime, the lamp shall enter the charging mode without lighting on, and the indicator light shall flash or be on green. If installing at night, the lamp shall continue to light on after two minutes, and the indicator light shall be on normally until the automatic charging and discharging cycle after daylight.

2. Indicator light:

Red light indicates lack of current and needs to be charged urgently; yellow light indicates that the current is below 70%, indicating that it can be charged; green light indicates that the power is sufficient.

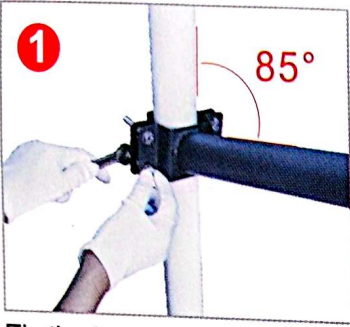
3. It supports external power supply and solar panel expansion charging. Solar lamps are often unable to display due to no sunlight in the room or lack of power and no light during indoor display. This lamp can support adapter or solar panel expansion charging <math><5V\ 0.1-3A</math>.

● Warm hints

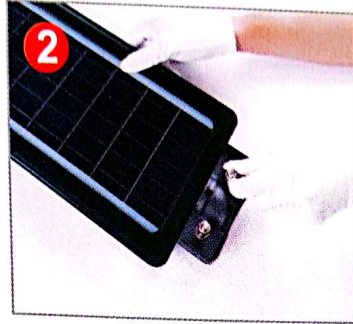
1. Please do not connect 220V AC to avoid damaging solar lights!
2. Please pay attention to fixing the solar panels and lamps so as not to hurt people when the wind blows.
3. Please do not disassemble the solar energy lamp, so as not to affect maintenance.
4. In order not to affect the use of lights, clean up the dust and dirt on the surface of the solar panels every 3 months.
5. Solar powered lamps contain batteries. Batteries are recyclables. Please do not litter.
7. The battery must be full of electricity before it can be used for more than 12 hours.

● Installation Points

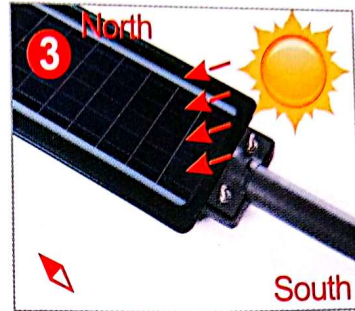
Light pole installed



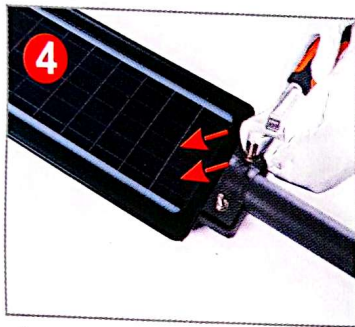
Fix the lamp post and clamp on the pole and tighten the screw.



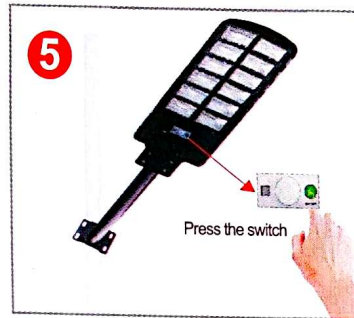
Loosen the lamp screw of the lamp.



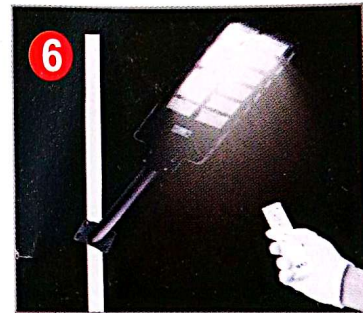
Adjust the direction of the lamp



Insert the lamp into the lamppost and tighten the screws.

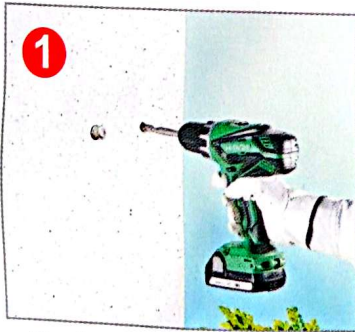


Please press green switch button on this light after finish installation



Use remote control can change the working mode and dimming.

Wall mounting



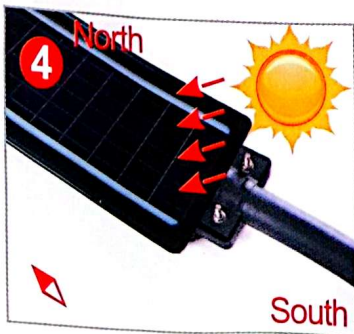
Perforate the wall and install the blasting screw.



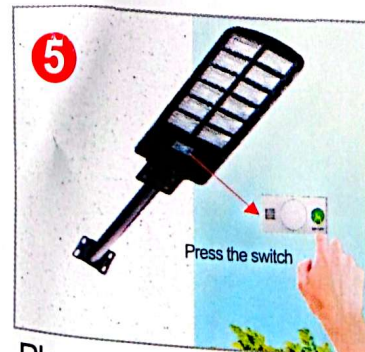
Fix the lamp post on the wall and tighten the screw.



Loosen the lamp screw of the lamp and insert the lamp into the lamppost



Adjust the direction of the lamp, tighten the screws.



Please press green switch button on this light after finish installation



Use remote control can change the working mode and dimming.